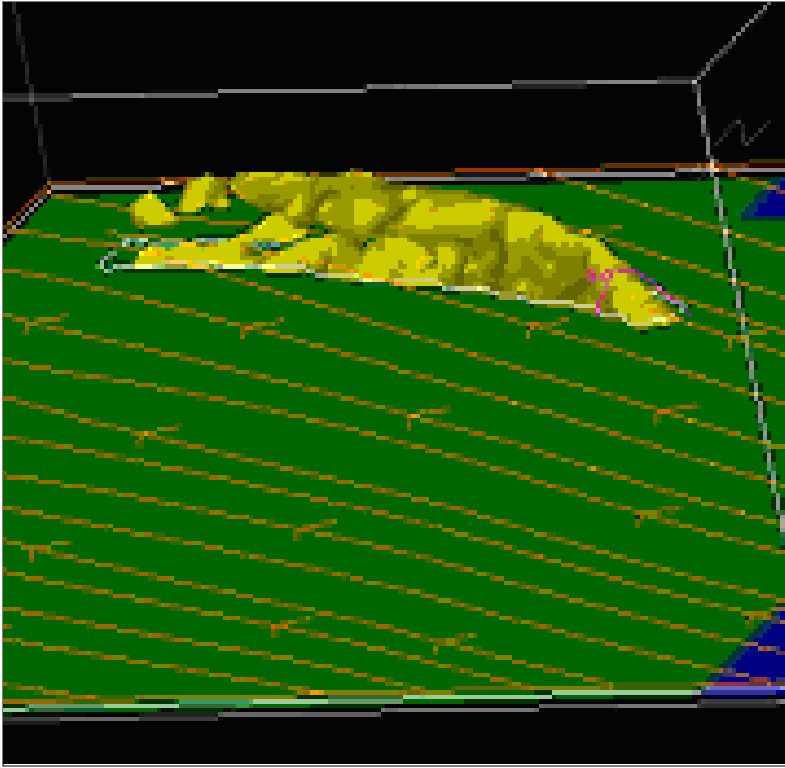
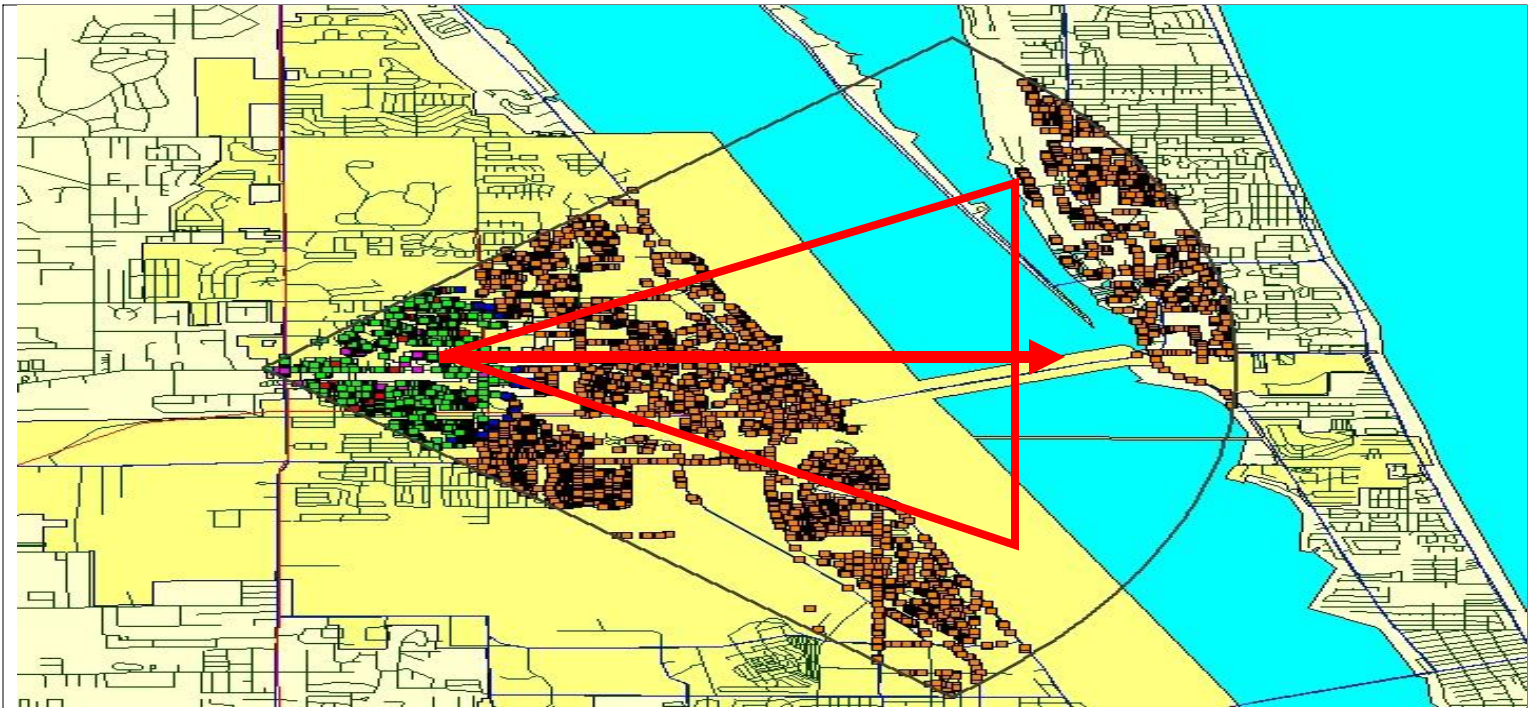


HazTrack911™

Atmospheric Dispersion & Notification Systems



EMTEL has teamed with Ensco Corporation to track severe weather and hazardous chemical, biological and radiation plumes on a geo-coded mapping system which will provide the capability to notify emergency management, first responders and the general public of approaching hazards with the lead time to save lives and property. Three dimensional (left) and two dimensional models are available in accordance with customer requirements and tracking technology. The OutReach911™ Out-Calling system is activated by a selectable safety perimeter that will provide the lead time to notification necessary for that particular event. Notice the different colored dots on the map which provide real time status on every call to the emergency manager for processing. Special needs individuals are located immediately and identified on the map for dispatcher servicing. This fully automated system provides hazard notification with the speed and validation capabilities never before available to emergency managers. HazTrack911™.



CITRIX

intel

verizon

CNI



Meteorological and Atmospheric Real-time Safety Support (MARSS) – HazTrak911™

Life-saving system provides real-time chemical hazard and meteorological analysis for emergency preparedness.

Ensures the safety of launches and other chemical, radiological, and bio-hazard projects by providing complete safety support for toxic and meteorological hazards, as well as blast hazards, while keeping manpower needs to a minimum and maximizing efficiency.

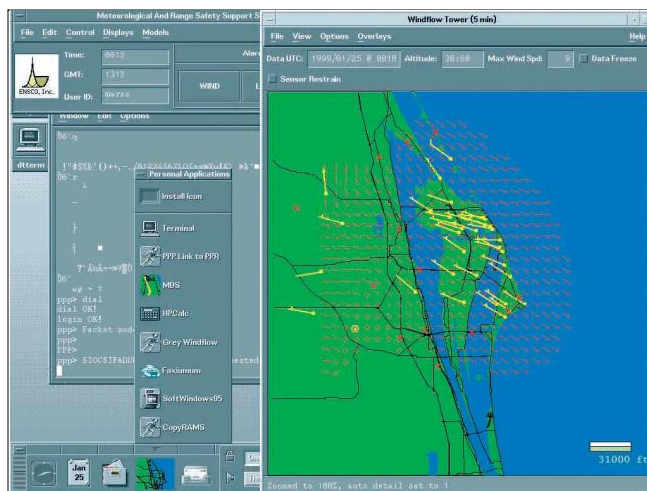
Detection, Analysis and Warning Capabilities

MARSS ingests measurements from real-time meteorological sensors and uses that data as the basis for chemical, bio, and radiation hazard predictions and continuous hazard monitoring. Analysis tools include both cold and hot spill toxic diffusion models that use databases of materials storage and chemical parameters.

Tools for Every Stage of Hazardous Operations Support as well as Evacuation Response Planning and Action

During daily activities, as well as testing preparations, toxic hazard prediction models assist safety managers in planning for and reacting to releases of hazardous materials (particularly those associated with launch vehicles). Meteorological data monitoring and display features provide support personnel with the tools necessary to detect fast moving hazardous weather conditions and initiate protective action to preclude injury to personnel and damage to critical assets.

Prior to a test, forecasting and modeling capabilities enable users to run mock scenarios to predict blast and toxic parameters. These parameters order to allow managers to characterize the nature and scope of project related dangers for go/no go decisions as well as to plan procedures for response to nominal and non-nominal test situations. In the event of an incident, recovery operations begin immediately, according to the pre-established protocol. Continuous graphic display of plume movement allows for enhanced communication between safety personnel and related agencies.



Key Benefits for Emergency Managers
Integrate weather measurements with toxic and blast hazard functions into a single application environment; proven in operational use. When coupled with the EMTEL OutReach911™ product solution, the plume system becomes an early warning system for notification of responders, managers, general public, and all associated support agencies. The OutReach911™ system is mobile, wireless, portable, reliable, redundant, fast, friendly, and robust. OutReach911 is a component of the RESPOND™ All Hazard Integrated Solution.