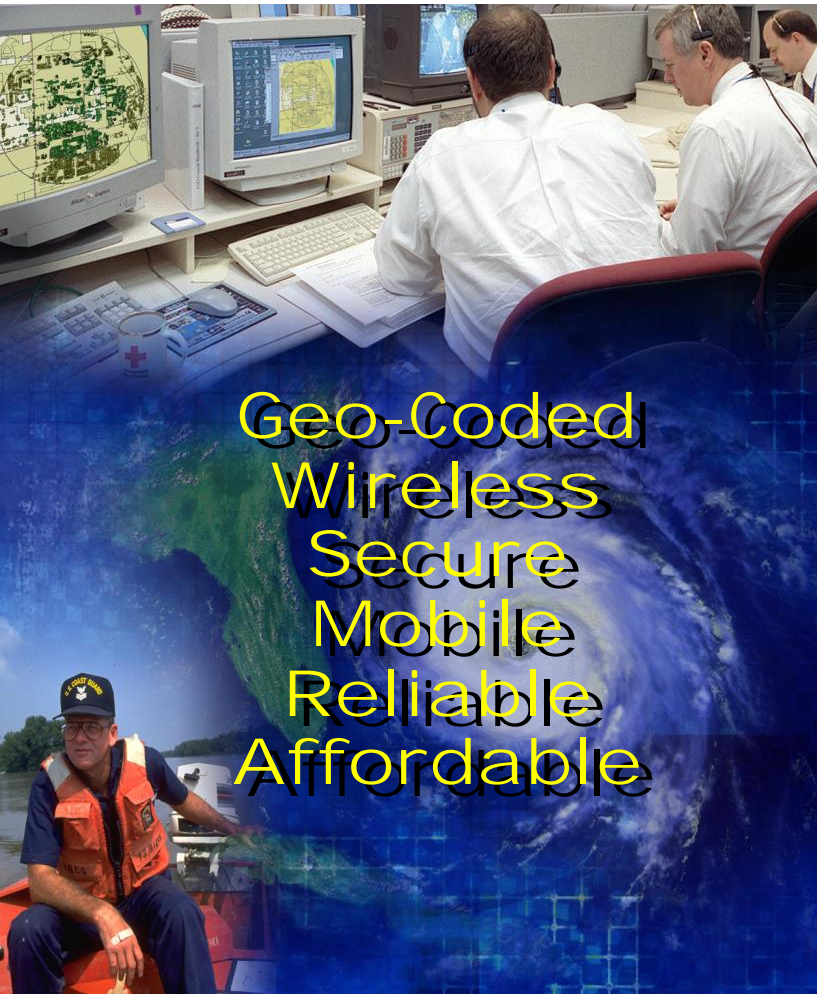


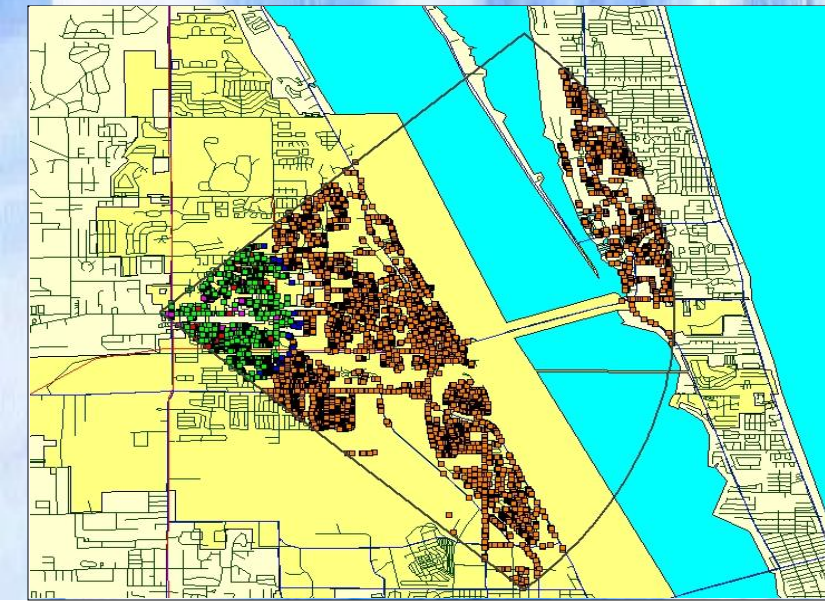
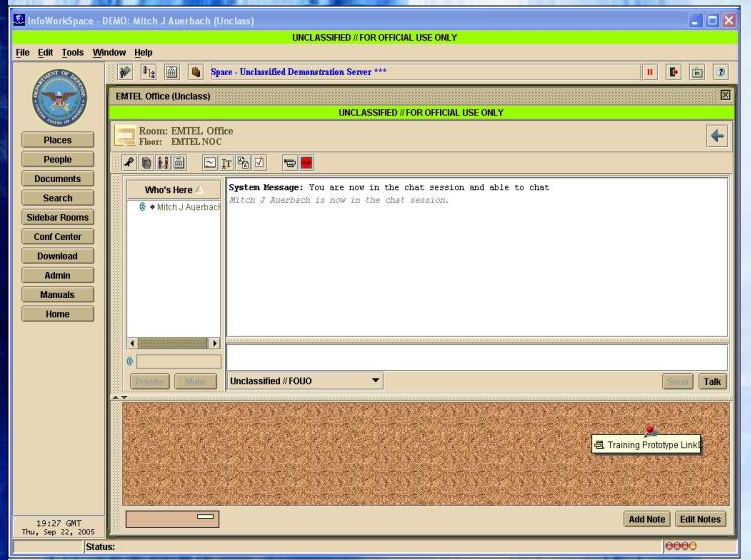
NetComm 911™

WEB Based Collaboration and Mass Notification System



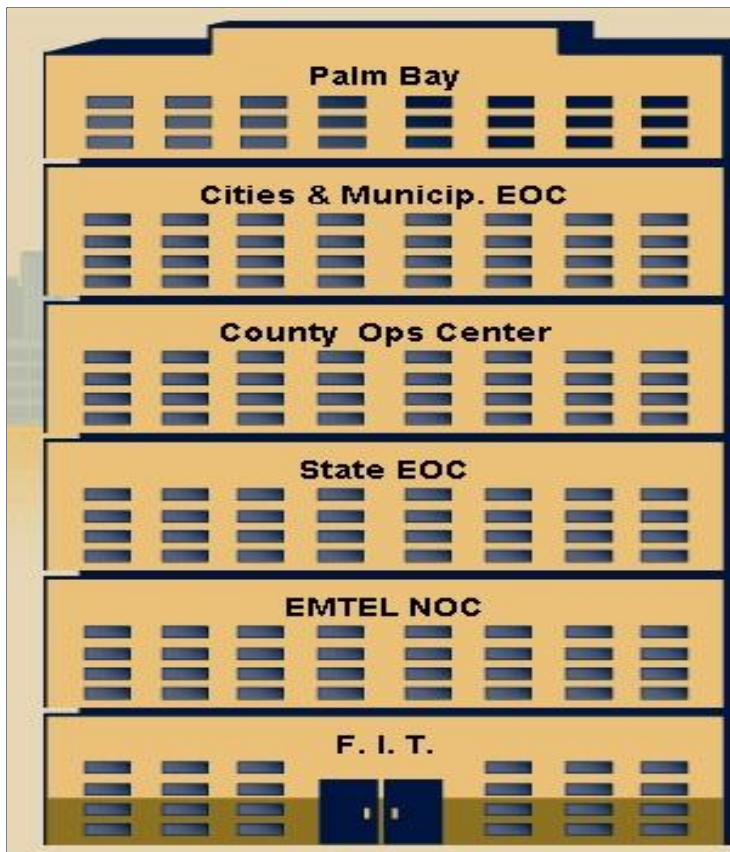
Secure EMTEL WEB Based Geographical Notification and Collaboration System that will quickly/reliably communicate with Responders and the Public in Real Time on All Major Communication Delivery Backbones Any Time, Any Place, and Any Computer World-Wide while providing Mitigation and Operations Conferencing from a secure environment protected by Citrix and other encryption software.

Geo-Coded
Wireless
Secure
Mobile
Reliable
Affordable



NetCOMM 911™ Web

Melbourne NOC	Lake Mary EOC	MJ's Office	Occupants: NetComm911™ provides secure conference rooms through which the customer can generate mitigation strategies or run live operations where OutReach911 can be activated to provide geo-coded responder and general public high speed notifications on eight types of communication backbones. The conference rooms can store secure data, video conference, and provide data exchange. This integrated solution will show presentations, automated training mod s., live video, and responder profiles. A unique sharing mode allows any number of attendee participants to view the desktop of the presenter and allow the presenter to control the operations environment from a secure position. The Ezenia InfoWorkSpace system technologies work w h e n other collaboration and notification systems fail.
J Bennett Office	B Rose Office	Direct Apps Wo...	
EMTEL Marketin...	EMTEL Office	Vacant	
Vacant	Vacant	Vacant	



The Netcomm911 solution provides remote access to your command and notification information from any computer, anywhere in the world. The Netcomm911™ technology provides a redundant backup to PDA Tracking devices, Wireless Template computers utilized by front line supervision, and Geo-coded Command notebooks that provide wireless, mobile, robust, reliable, friendly, and durable mobilization and evacuation capability to communicate with millions of residents and responders from a vehicle or other away location. Virtual offices, floors, and buildings provide controlled environments for all collaboration strategy implementation.



Emergency Management Telecommunications, Inc.
 445 Pineda Court, Melbourne, Florida 32935
 Phone: 321-259-1137 FAX: 321-259-1121
 E-Mail : pgaskin-emptel911@cfl.rr.com

