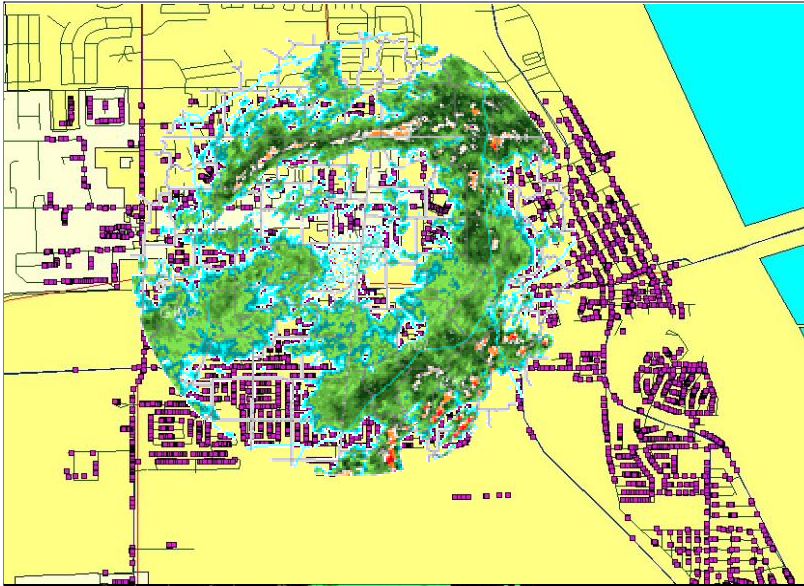


STORM TREK⁹¹¹TM

The New StormTrek911TM from EMTEL and Impact Weather Utilizes OutReach911 Geo-coded Out-calling Engines to Automatically Notify Schools & Other Agencies of Approaching Severe Weather.

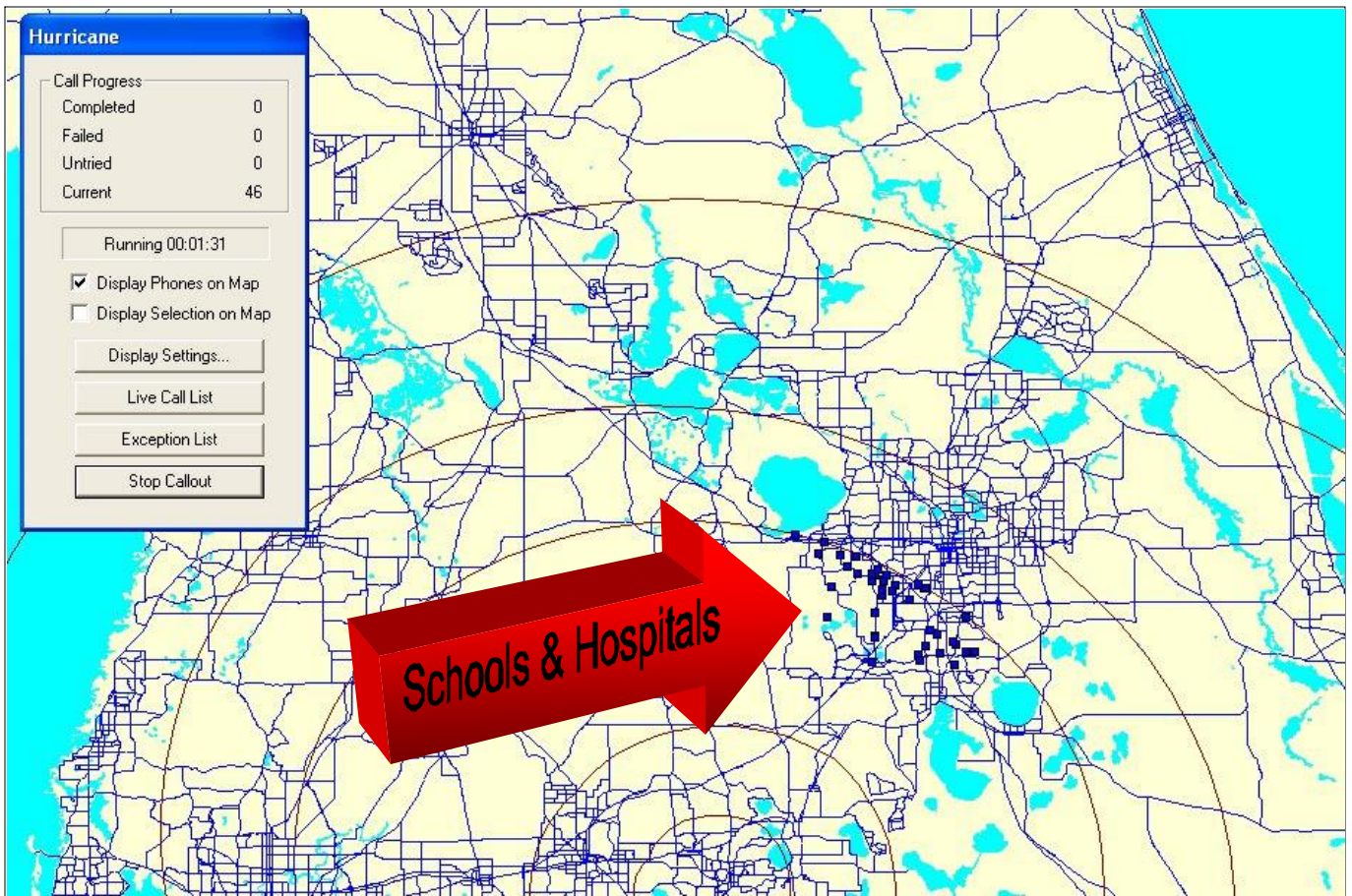


The StormTrekTM911 System utilizes NEXRAD radar with real-time updates to track severe weather on the OutReach911 geo-coded maps to notify any agency, group, business, school, or other organization which is loaded on the mapping layer of approaching severe weather from any distance prescribed by the end user. As the storm moves across the perimeter boundary established by the customer, the customer is notified by phone, cell, FAX, e-mail, pager, FM (Optional), RF, and any other backbone required by the target entity. The OutReach911TM system will notify emergency management, activate first responders, and notify the general public in conjunction with the target alert as specified by the customer. All targets in the path of the storm may be notified with StormTrek911TM in time to save lives and property. Numerous other severe weather solutions are available via EMTEL and Impact Weather.

For Further Information Please Contact EMTEL At:
Emergency Management Telecommunications Incorporated
National Emergency Communications Network Operations Center
445 Pineda Court, Melbourne, Florida 32935
Phone 321-259-1137 FAX 321-259-1121



STORMTREK911™



StormTrek911™ will track hurricanes, tornadoes, lightning and other severe weather on the OutReach911™ geo-coded mapping system to provide automated notification to any subset of the call data base including schools, hospitals, nursing homes, churches, and other critical institutions. As the pre-defined safe boundary of the weather approaches one or all of the above entities, StormTrek911™ will generate the call list and rush it to the call engines for servicing. As the weather system advances, it activates additional call entries from the map until all selected call categories have been exhausted. The new Impact Weather NEXRAD feeds are fast enough to provide lee time for calling residents and responders prior to the weather reaching its targets. Even tornado warning times can be adequate to advise the public to take cover and seek a secure environment. Interactive Voice Response (IVR) incorporated into the OutReach911™ technology can provide “real time” special needs and other status data fast enough to allow dispatchers to support the need. StormTrek911™ will integrate with all of the other EMTEL RESPOND® emergency management products to provide a true total solution for emergency management telecommunication problems both natural and man generated.